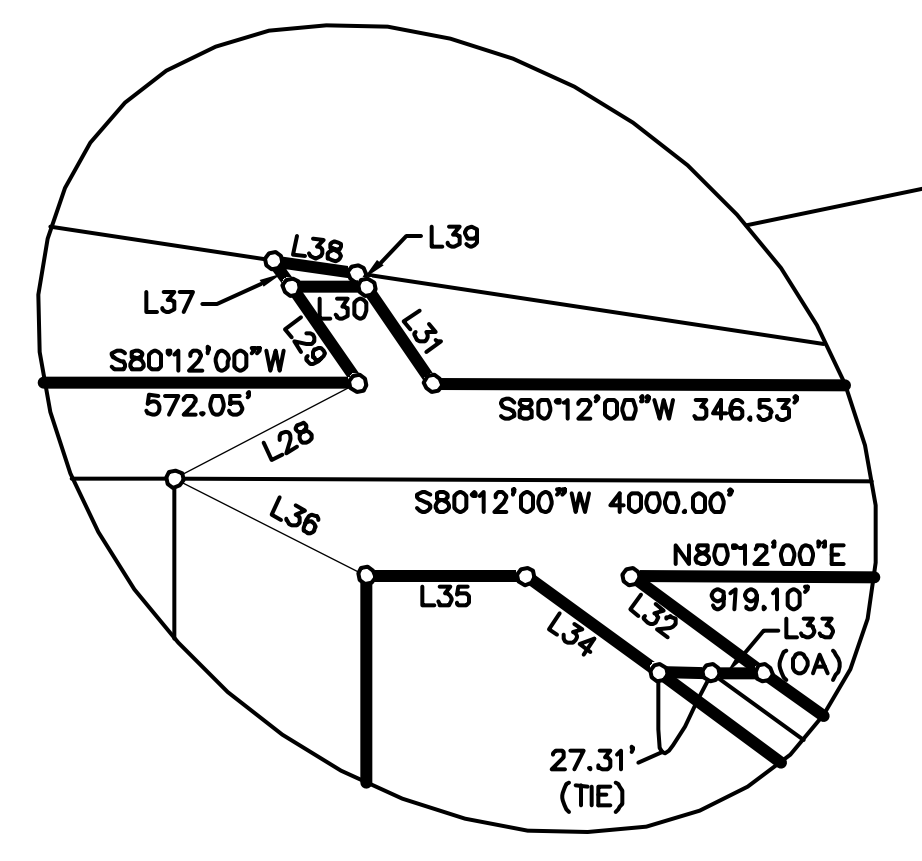


LINE TABULATION

NO.	BEARING	DIST
L1	S68°29'47"E	155.29'
L2	S39°31'39"E	74.84'
L3	S33°13'21"E	176.49'
L4	S53°07'04"E	33.25'
L5	S85°58'18"E	89.53'
L6	N85°44'24"E	209.41'
L7	S80°50'58"E	96.13'
L8	S66°27'10"E	151.52'
L9	S78°49'58"E	77.93'
L10	S65°31'27"E	119.48'
L11	N84°02'45"E	46.78'
L12	N24°35'28"E	17.60'
L13	N33°52'48"W	34.71'
L14	N68°50'21"W	181.76'
L15	N60°01'20"W	98.32'
L16	N26°55'46"W	54.58'
L17	N46°13'09"W	78.40'
L18	N72°01'04"W	149.61'
L19	N84°03'27"W	77.05'
L20	N67°37'08"W	48.01'
L21	N36°58'13"W	38.26'
L22	N04°23'38"W	123.98'
L23	N20°31'58"W	59.42'
L24	N34°30'20"W	59.01'
L25	N40°20'36"W	89.96'
L26	N51°04'53"W	86.54'
L27	N63°56'19"W	157.41'



LINE TABULATION

NO.	BEARING	DIST.
(TIE)L28	S52°31'36"W	107.66'
L28	S44°38'00"E	60.91'
L30	S80°12'00"W	38.99'
L31	N44°38'00"W	60.91'
L32	N63°56'19"W	85.35'
L33	N80°12'00"E	54.62'
L34	S63°56'19"E	85.35'
L35	N80°12'00"E	83.16'
(TIE)L36	S73°14'05"E	111.80'
L37	S44°38'00"E	16.53'
L38	S88°36'52"W	43.93'
L39	N44°38'00"W	8.70'

SURVEYOR'S STATEMENT

I CERTIFY THAT I SUPERVISED THE SURVEY OF THE PROJECT LANDS; THAT THE PROJECT BOUNDARY DELINEATION FOR THE MIDDLE FORK AMERICAN RIVER PROJECT AS SHOWN ON THIS EXHIBIT "G" IS DEVELOPED WITHIN REASONABLE ACCURACIES AS REQUIRED IN 18CFR4.39 & 18CFR4.41 TO THE GEOGRAPHIC LOCATION. THIS EXHIBIT IS BASED UPON MAPS OF THE EXHIBIT "K", SHEET 26 OF THE MIDDLE FORK AMERICAN RIVER PROJECT NO.2079 AND BOOK 2 SURVEY'S PAGE 78 OFFICIAL RECORDS OF PLACER COUNTY AND CORRECTLY SHOWN HEREON. SEE CONTROL SCHEME FOR DETAILS OF THE BOUNDARY DELINEATION AND DATA ACQUISITION.

ANDREGG GEOMATICS

Dennis G. Meyer
 DENNIS G. MEYER, LS 4751
 LICENSE EXPIRES: 9/30/11

NOTES

SHADED TOPOGRAPHY SHOWN HEREON PER EXHIBIT 'K', SHEET 26; MIDDLE FORK AMERICAN RIVER PROJECT; TUNNELS PROJECT AREA REVISED OCT. 20, 1977

ALL FACILITIES AND FEATURES SHOWN HERE ON ARE PER DATA COLLECTED BY OTHERS.

REFERENCE POINT COORDINATES

NAD83 CALIFORNIA STATE PLANE COORDINATE SYSTEM ZONE II (CCS83, ZONE 2); U.S. SURVEY FEET

- LEGEND**
- PROJECT BOUNDARY
 - RESERVOIR STORAGE STAGE
 - TUNNEL (WITH SHAFT)
 - SECTION LINE, ESTABLISHED
 - SECTION LINE, PROTRACTED
 - SUBDIVISION LINE, GOVERNMENT LAND SURVEY
 - ◆ SECTION CORNER, FOUND
 - ◊ SECTION CORNER, RECORD
 - 1/4 CORNER, FOUND
 - ◻ 1/4 CORNER, RECORD
 - COUNTY LINE
 - U.S. FOREST BOUNDARY
 - PROJECT BOUNDARY CORNER
 - (OA) OVERALL DIMENSION
 - RP REFERENCE POINT
 - V PUBLIC LAND
 - ROAD
 - BRIDGE
 - RIVER OR PERENNIAL STREAM
 - INTERMITTENT STREAM
 - SPRING
 - POND OR LAKE, WATER LEVEL JULY 1961
 - TREES OR BRUSH
 - STREAM FLOW GAGING STATION
 - WATER SURFACE GAGING STATION
 - CAMPGROUND
 - BUILDING
 - GOVERNMENT BENCH MARK
 - BENCH MARK RELOCATION
 - PHOTOGRAMMETRIC PRINCIPAL POINT
 - TRIANGULATION STATION
 - FIELD ESTABLISHED ELEVATION
 - PHOTOGRAMMETRIC ELEVATION
 - MRO MINERAL RIGHTS ONLY
 - (1) RECORD PER 2 ROS 78
 - (2) RECORD PER 9 ROS 126
 - (3) RECORD PER 13 ROS 157

EXHIBIT 'G' PROJECT 2079
MIDDLE FORK AMERICAN RIVER PROJECT
TUNNELS PROJECT AREA
 A PORTION OF SECTIONS 1 & 2, T.13 N., R.11 E.,
 A PORTION OF SECTIONS 4-6, T.13 N., R.12 E.,
 A PORTION OF SECTIONS 26, 31-35, T.14 N., R.12 E., M.D.M.
 PLACER COUNTY, CALIFORNIA
 SCALE: 1"=500' FEBRUARY 11, 2011

